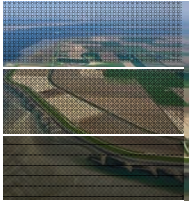
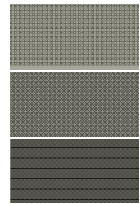




## Adding value through Stakeholder processes for coastal projects in data poor environments

Heleen Vreugdenhil, Jill Slinger, Bouke Ottow, Philippe  
Ker Rault, Alessio Giardino, Christophe Briere

Delft University of Technology  
Deltares



Senegal  
Guinea  
Ivory Coast  
Ghana  
Sao Tome



23 juli 2018



ares



# Contributions of stakeholder inclusive processes

1. Data collection/ Ground-truthing: biogeophysical and social aspects
2. Developing (shared) system understanding
3. Insight in past and current actions/ strategies
4. Identify ESS
5. Elicit problem perceptions, values and priorities
6. Generate new solutions - Creativity: changing scale, issues involved, future visions
7. Process design preferences: who should be involved, how and when
8. Increased support for new coastal and port development strategies
9. Prepare for evaluation and decision making
10. Contribute to (participatory) monitoring
11. Model improvement



## Slide 3

---

HV1

hoe handig zeggen: voorbeeld bouke in loodrechtse plassen> uit de semi automatische meting en monitoring kwam consistent een fout (gebeurde bij het omzetten door modelleur); door de participatieve monitoring kwam dit boven water

none; 12-6-2018

# Discussion – relate added value to process phase

Scoping/  
Defining

Design

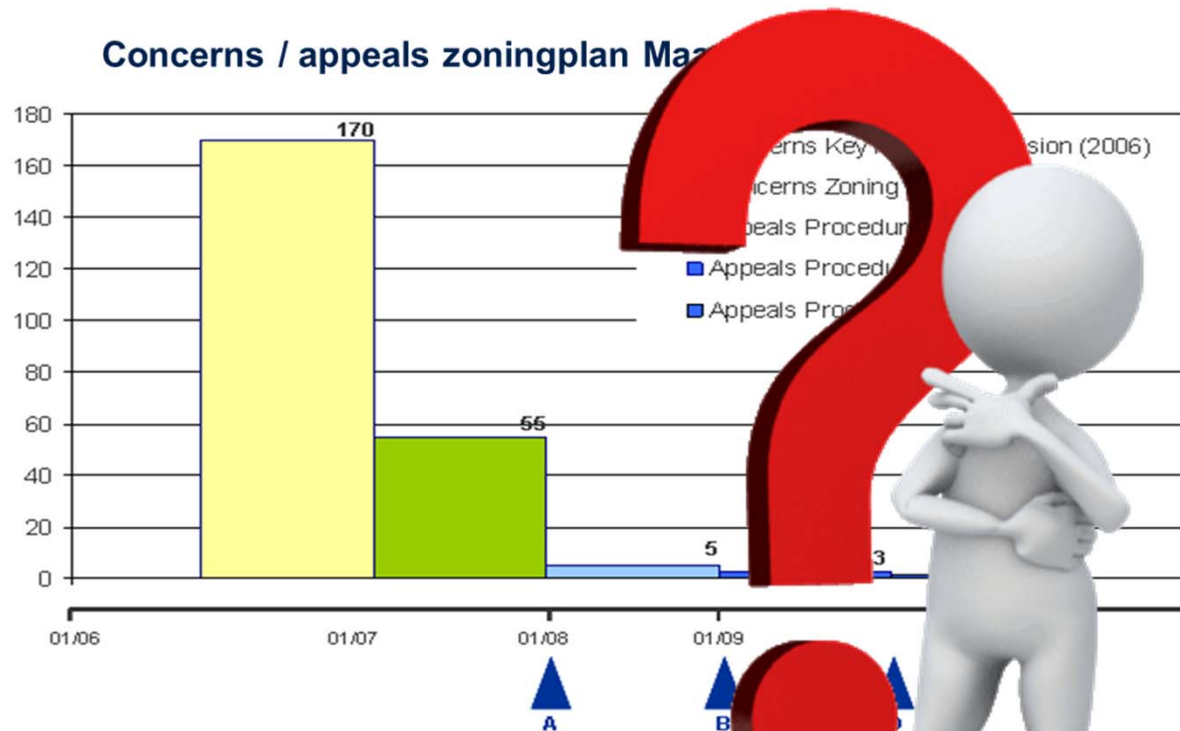
Realization

Maintain/  
Operate,  
Monitoring

Finalizing  
(evaluation,  
removal)

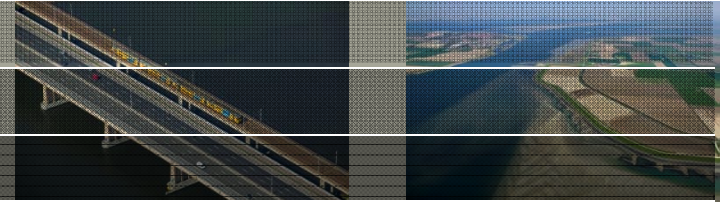
Stakeholder Activity	Added Value

# Discussion – find ways of demonstrating/ visualising added value



- A Vision and Trust**
- B Sustainable Voordelta**
- C Sustainable Maasvlakte**
- D Sea birds Maasvlakte 2**

# Contact details



[Heleen.Vreugdenhil@deltares.nl](mailto:Heleen.Vreugdenhil@deltares.nl)